



Billacombe Road | | Plymouth | PL9 7HX

Guide price £280,000



COPP ESTATES

WHERE YOUR NEXT CHAPTER
BEGINS

Billacombe Road |
Plymouth | PL9 7HX
Guide price £280,000

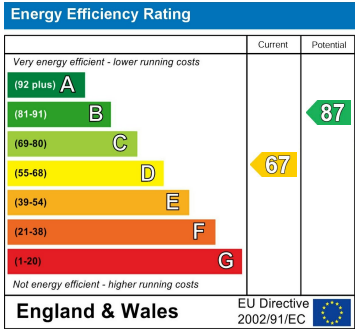
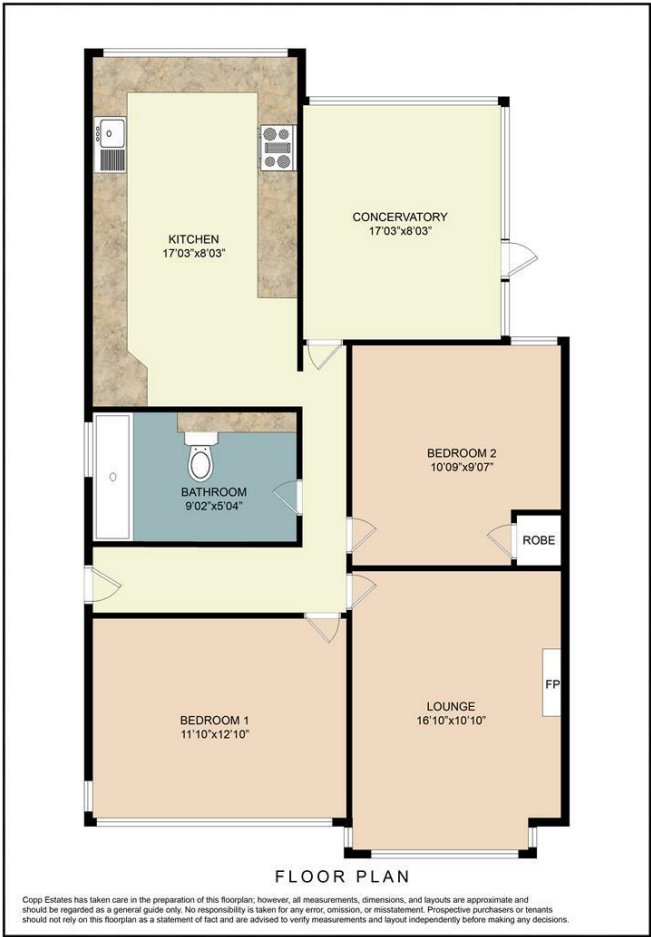
Nestled in one of Plymouth's most desirable residential areas, this beautifully renovated two-bedroom semi-detached bungalow offers stylish, modern living with exceptional attention to detail throughout.

Recently refurbished to a high standard, the property combines contemporary comfort with practical design — ideal for downsizers, professionals, or anyone seeking single-level living in a peaceful yet convenient location.

Step inside to discover an inviting lounge featuring a charming fireplace, creating a warm and welcoming space to relax and unwind.

The brand-new kitchen is a real highlight, fitted with sleek modern units, ample storage, and integrated appliances, including an oven, hob, dishwasher, and fridge-freezer. The breakfast bar provides a perfect

- Newly renovated throughout
- Two spacious bedrooms (main with built-in wardrobes)
- Stylish new kitchen with breakfast bar and integrated appliances
- Inviting lounge with feature fireplace
- Modern bathroom with walk-in shower
- Spacious conservatory offering flexible living space
- Landscaped rear garden
- Off-road parking and single garage to the rear
- Desirable Plymouth location close to local amenities and bus routes
- Conservatory to the rear



Drake Circus 1 Charles St
Plymouth
PL1 1EA
07392818622
tyler.copp@coppestates.co.uk
www.coppestates.co.uk